



Christian

**A L O C**

Athletic League of Orange County

*Basketball*



Current NHFS rules apply w/the following exceptions:

— Updated Jul 2021 —



# CALOC

youth basketball rules

## ‡ ELEM 5&6 ‡



### ‡ GAME CLOCK ‡

Four -10- Min Running Qtrs  
-5- Min Half



### ‡ STOP CLOCK ‡

- 1 Last 2-Min's ⇔ 10-Pts or Less ↓
- 2 During Free Throw's



### ‡ OVERTIME ‡

-4- Min's Each Quarter



### ‡ ELEM MERCY RULE ‡

4<sup>TH</sup> Qtr ⇔ 20+Pts ⇔  
No Backcourt Press

1 Tech Foul ⇔ 2<sup>ND</sup> Warning

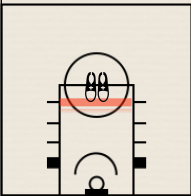


### ‡ TIME OUTS ‡

-3- Full ⇔ -2- :30 Sec  
-1- Add'l T/O ⇔ In Each O/T

### ‡ FREE THROWS ‡

NFHS ⇔ On The Release  
5/6 Grade ⇔ 12'-Feet



## ‡ JR-HI 7&8 ‡



### ‡ GAME CLOCK ‡

Four -8- Min Qtrs  
Regulation/Stop Clock



### ‡ HALFTIME ‡

-5- Min's



### ‡ OVERTIME ‡

-4- Min's Each Quarter



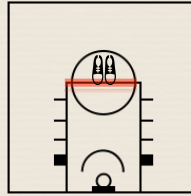
### ‡ JH MERCY RULE ‡

No Running Clock Enforced



### ‡ TIME OUTS ‡

-3- Full ⇔ -2- :30 Sec  
-1- Add'l T/O ⇔ In Each O/T



### ‡ FREE THROWS ‡

NFHS ⇔ On The Release  
7/8 Grade ⇔ 15'-Feet

## ‡ CALOC ‡ REMINDEERS

Elem 5/6  
Solo Ref



Jr. High 7/8  
2- Refs



### ‡ OBSERVE NFHS ON ‡ BOTH ELEM & JR HIGH LEVELS



- ▶ Fouls -5- Personal
- ▶ Bonus On 7 & 10
- ▶ Girls Ball ⇔ 28<sup>5</sup>
- ▶ Technical & Flagrant Fouls
- ▶ No Jewelry or Tape Covering Jewelry



### RULES OFTEN MISINTERPRETED



#### OBSERVE THESE CALOC POLICIES

- ▶ Full court press is allowed (Boys & Girls)
- ▶ 10-Sec back-court enforced (Boys & Girls)
- ▶ Basket "support poles" must have protection



### ‡ GOOD -2- KNOW ‡

Game Fees  
Refs collect from each Coach.



### Inclement Weather

A game should be deemed unplayable by both Coaches during bad weather.